

- 1 A Moorcroft trumpet vase, circa 1920, Pomegranate pattern, impressed to the base and signed William Moorcroft in green.
Est.£100-£200



- 2 A Moorcroft bowl circa 1919, Pomegranate, impressed to the base, signed William Moorcroft.
Est.£100-£200



- 3 A Wemyss vase, with flared crimped rim, impressed to the base.
Est.£40-£60



- 4 Two Nao Lladro figures; young girls holding puppies.
Est.£20-£40



- 5 Two Nao Lladro ducks.
Est.£20-£40



- 6 Two Nao Lladro figures; boy with accordion and girl in white dress.
Est.£20-£40



- 7 Three Lladro Puppies, one with the original box.
Est.£50-£80



- 8 Two Lladro figure groups, A La Carrera, no.5460, with the original box, together with a lady & dove,
Est.£70-£100



- 9 A Beswick Beatrix Potter Tabitha Twitchett, a Royal Albert Mittens and Moppet and Tom Kitten and Butterfly, 10cm high.
Est.£30-£50



- 10 Beswick, Alice Series: Alice and Cheshire Cat, tallest 12cm high.
Est.£30-£50



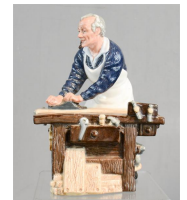
- 11 A Beswick Lincoln Red Bull.
Est.£70-£100



- 12 A group of nine Nao Lladro and other figurines
Est.£30-£50



- 13 A Royal Doulton HN 2678 The Carpenter figure.
Est.£20-£30



- 14 A Royal Worcester vase and cover, signed H Stinton, painted with highland cattle scene.
Est.£150-£250



- 15 Parian ware; Greek Goddesses, a pair, stamped Eneret.
Est.£100-£200



- 16 A Gray's Pottery coffee set comprising coffee pot, cream jug, sugar bowl and six coffee cans and saucers, some marked Trellis, others numbered 908A.
Est.£150-£250



17 An Early 20th century assorted cream ware milk and cream jugs.
Est.£10-£20



25 Two Torquay ware tea pots, a Copeland jug with pewter cover, green ground with embossed flowers, a 1925 Haigh dish and other items.
Est.£30-£50



18 A miniature part tea set, white porcelain in the Belleek style.
Est.£10-£20



26 A pair of vases in the form of lilies, and a flower frog in the form of a sunflower.
Est.£10-£20



19 A group of ceramic doll tops, a continental cruet set, a French mustard pot, etc.
Est.£20-£30



27 A Portmerion Susan Williams-Ellis coffee set comprising coffee pot, six coffee cans and saucers, a cake plate, sugar bowl and cream jug.
Est.£50-£80



20 A group of miniature Crestware, including part tea services and Sheffield loving cup.
Est.£20-£30



28 A Susie Cooper 1930s part dinner service in the Dresden Spray pattern, comprising meat plate, gravy jug, four saucer plates, three cake plates, six dessert plates, six dinner plates.
Est.£30-£50



21 A 1930s Old Court lustre ware hand painted bowl and vase, jar and cover and baluster vase.
Est.£20-£30



29 A twin handled slip glazed cup dated 1779, with inscription 'Ere He Was Wed, His Heart was Light, and he Would Sing...'
Est.£20-£40



22 A group of blue and white pottery, Victorian, including a sauce boat.
Est.£20-£30



30 A 19th century Prattware pot lid, Trafalgar Square, Nelsons Column.
Est.£10-£20



23 A group of ceramics to include a Japanese honey pot, character jug, Lorna Doone Adams dish, Northampton crestware chair and other items.
Est.£20-£30



31 A Noritake part tea service; three cups, three saucers, teapot, sugar bowl and cover, milk jug.
Est.£20-£40



24 A Minton Haddon Hall part dinner service.
Est.£40-£60



32 A pair of porcelain leaf form dishes, Dresden style.
Est.£20-£30



33 Two Royal Crown Derby plates, and a Victorian lustre plate.
Est.£29-£30



41 A group of Liliput lane model houses, and animal figures, some boxed.
Est.£30-£40



34 A Colclough part tea service.
Est.£20-£40



42 A Liliput Lane 'Scotland' model, boxed with original certificates.
Est.£30-£40



35 A Joseph George tureen & cover, with ladel, and smaller tureen with oval dish, platter 'Margaret Rd No 143137'.
Est.£20-£40



43 A quantity of blue and white ceramics, including Victorian jugs, plates, sugar bowls, and a H M & Co., bowl.
Est.£20-£40



36 A group of Doulton in the Watteau pattern, blue and white, four graduated platters, twelve plates.
Est.£20-£40



44 A pair of Blue Staffordshire type dogs and Doulton hot water bottle.
Est.£10-£20



37 A Wesleyan Society Gissing Cup, Nymolle Denmark 'A Midsummer Night Dream' plate, Victorian jug etc.
Est.£20-£30



45 A pair of Staffordshire dogs and another. (3)
Est.£10-£20



38 A group of blue and white ceramics including Booths Real Old Willow Pattern cups and saucers.
Est.£10-£20



46 A large blue and white ironstone jardiniere, 20cm high.
Est.£30-£40



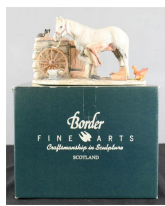
39 A group of Victorian and later ceramics including a Royal Mail part service, and an SK & Co Convolvulus jug and cover, Woodpecker lustre jug.
Est.£20-£40



47 A signed Michael Francis studio bowl Cobalt oxide hand painted floral design and fish to the base, in the Delft style, 1991-2003, signed, 24cm diameter.
Est.£20-£30



40 A Border Fine Arts model, in original box.
Est.£10-£20



48 A group of ceramics to include a toby jug, two Victorian cups and saucers, a red port glass, and other items.
Est.£20-£40



- 49 A 19th century red and white porcelain part tea service, Rd. no. to the bases. Est.£20-£30



- 50 A Royal Doulton Top o The Hill DMHN1834 lady, a Pearlware soup tureen and plate, and Price of Kensington moustache mug. Est.£20-£40



- 51 Wood & Sons Burslem part dinner service, including two tureens, two serving plates, dinner and side plates. Est.£20-£40



- 52 A quantity of Masons china, to include tea pot, dishes, plates etc. Est.£20-£40



- 53 An English Bell China S&C England Blue bells and yellow blossom pattern cups and saucers, sugar bowl, milk jug and five side plates. Est.£10-£20



- 54 A Victorian wash set including jug and bowl. Est.£10-£20



- 55 Three large Victorian meat platters, together with two blue and white tureens. Est.£30-£40



- 56 A 19th century black and white Liverpool pottery cup and saucer, H Leighs Gilford dish, R Woods Malvern cup, a 19th century miniature jug and bowl etc. Est.£40-£60



- 57 A mixed medium figurine, blue glass and clay, Denmark, signed to the base, 21319, 32cm high. Est.£80-£120



- 58 A Studio high fired lustre glazed wavy rimmed bowl by Peter Gerard Starkey, green trailing seaweed design, 16cm diameter. Est.£10-£20



- 59 A Victorian green vase, continental. 17cm high, 9cm wide. Est.£10-£20



- 60 A signed vintage Navajo hand decorated red clay pot, 11cm high. Est.£20-£30



- 61 A pair of signed studio pottery vases, Sri Lankan, tall trees and foliate incised and hand painted decoration, 32cm high. Est.£20-£40



- 62 A terracotta treacle glazed pippin and bowl. Est.£20-£30



- 63 A pair of Athens porcelain vases, kitch, depicting Egyptian scenes. Est.£10-£20



- 63A A one eyed monster mask. Est.£20-£30



64 A 1930s James Kent Chintz wild rose hexagonal plate together with a 1940s midwinter bowl in pale blue.
Est.£10-£20



65 A pair of 1940s Maling grey and pink lustre vases.
Est.£20-£30



66 A Kaiser W Germany porcelain vase, 582/25.
Est.£40-£60



67 A 20th century porcelain vase.
Est.£20-£30



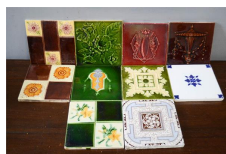
68 A clay pot in the form of an Arabian Sheikh, his embellished turban forming the cover.
Est.£30-£50



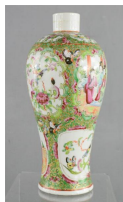
69 An antique pine wash stand back, inset with five tiles; possibly Minton.
Est.£40-£60



70 A group of tiles, various colour and patterns.
Est.£20-£40



71 A 19th century Chinese Famille Rose vase, 24cm high.
Est.£20-£30



72 A blue and white Chinese vase, depicting prunus blossom.
Est.£20-£40



73 A Japanese jar and cover.
Est.£20-£30



74 A Chinese blue and white bowl, depicting cockerel, hen and chick.
Est.£150-£250



75 A Chinese baluster vase, with red calligraphy mark to the base.
Est.£30-£50



76 Two 20th century Chinese ox blood Sang de Boeuf type vases on grey ground, character mark to the base, 35cm high.
Est.£20-£40



77 A late 19th century rare Canton Famille Rose trinket box, the porcelain plaque inset top with embossed white metal/antimony 12 by 12cm.
Est.£40-£60



78 A late 19th century Japanese blue and white charger, with impressed calligraphy mark verso, depicting peacocks, 34cm diameter.
Est.£40-£60



79 Two Chinese vases, bulbous form, painted with flowers, red and white with gilded highlights.
Est.£20-£40



80 A pair of late 19th/early 20th century Japanese vases, the ovoid bodies with red ground and raised enamelled decoration, 47cm high.
Est.£70-£100



81 A 19th century Chinese mug, hand painted with a figural scene.
Est.£30-£40



82 A Chinese stoneware vase.
Est.£20-£30



83 A group of Chinese/Japanese ceramics, including tea bowls, saucers, cups, dishes etc.
Est.£10-£20



84 A 19th century Japanese Kutani figural water stoop, signed by the artist, 13cm high.
Est.£20-£40



85 A group of Chinese blue and white jars and covers, and a dish.
Est.£10-£20



86 A blue and white Japanese dish depicting a peonie.
Est.£20-£30

87 A 19th century Canton hexagonal enamelled teapot with antimony mounts of cast dragons, monkey and pheonix, stamped signature to the base, 10cm high.
Est.£40-£60



88 A tortoiseshell 19th century Chinese chopstick and knife set.
Est.£10-£20



89 A Chinese paperweight, modelled in spherical form with the signs of the zodiac, character marks to the base.
7½cm high.
Est.£40-£60



90 A hardwood carved Chinese deity.
Est.£50-£80

91 A Chinese gilt and polychrome carving of a deity, 43cm high.
Est.£100-£200

92 A pair of Chinese temple censers, in bronze.
Est.£400-£600



93 A 19th century carved hardwood figure of a Hindu Deity, Lord Ganesh, on raised pedestal with carved rat figure, 39cm high.
Est.£50-£80



94 A large 19th century carved wooden elephant, Indian.
Est.£300-£500



95 A pair of 20th century Indian bone carvings of Hindu Goddess, 20cm high.
Est.£10-£20



96 A silver plated tantalus.
Est.£100-£150



97 A pair of Victorian blue glass lustres,
with enamelled floral decoration.
Est.£80-£120



98 A 1930s Sabino frosted glass knife rest
in the form of a poodle.
Est.£20-£40



99 An early millefiori glass paperweight,
possibly Richardson.
Est.£70-£100



100 A 1930s Sabino opalescent knife rest of
a moulded frog.
Est.£30-£50



101 An Art Deco 1930s malachite style glass
moulded Dahlia powder bowl, 10cm
high.
Est.£20-£40



102 A Skavo Scandinavian studio glass
vase with marbling effect and piped blue
glass trail, 19cm high.
Est.£10-£20



103 Two Caithness bud vases, and a glass
stem vase, with swirl pattern.
Est.£10-£20



104 A glass vase etched with birds and tree
design, signed Orrefors, dated 1961,
16cm high.
Est.£20-£40



105 A 1930s French moulded frosted glass
bowl in the 'Pansy' design, 27cm
diameter.
Est.£20-£40



106 A Nancy wine glass, signed Daum.
Est.£20-£40



107 A vintage iridescent glass studio bowl,
signed to the base, 8cm diameter.
Est.£20-£30



108 Blenko; a glass dish, etched front and
back with stag beneath a tree.
Est.£20-£40



109 Blenko; green glass chamber stick and
blue bowl with wavy edge.
Est.£20-£40



110 Blenko; a glass jug and a large shaped
bowl, in amethyst colour, 20cm high.
Est.£30-£50



111 Blenko glue glass stem vase, 46cm.
Est.£20-£40



112 Blenko USA Millenium II vase, limited edition 1478 of 2000, 20cm high and a further Blenko style vase.
Est.£30-£40



113 Two Blenko glass decanters, one blue and one amethyst coloured, 26cm high.
Est.£40-£60



114 Blenko; two carafs, yellow to orange and one in blue, both 21cm, high.
Est.£40-£60



115 Blenko glass blue vase, 19cm high, and a Blenko style dish with crimped edge, stopper and mushroom top.
Est.£20-£40



116 Blenko: a limited edition yellow and blue vase, 30cm high.
Est.£40-£60



117 Blenko; a pair of glass hurricane lamps, cracked finish in red-orange, 31cm high.
Est.£30-£50



118 A quantity of Swarovski examples including some boxed.
Est.£30-£40



119 A group of glass and crystalware, Bohemia crystal, Aynsley boxed Swarovski.
Est.£20-£40



120 Two Caithness pieces; one boxed paperweight.
Est.£20-£30



121 A group of glassware including two demi jons, a cranberry glass jug etc.
Est.£20-£40



122 Charles Rene Mackintosh style mirrors.
Est.£20-£30



123 A large glass baluster candle holder.
Est.£10-£20



124 Three Dartington glass decanters with stoppers circa 1975.
Est.£20-£40



125 A set of nine retro wine glasses and crystalware.
Est.£10-£20



126 A set of six antique custard cups.
Est.£10-£20



127 Three glass decanters, one engraved with a fox head.
Est.£20-£40



128 A quantity of Stuart crystal, Maddison design; six whisky tumblers, seven wine glasses, five champagne, four large wine, four sherry/port, and a caraf. Est.£20-£40



129 A glass cloche, a glass 'Poison' bottle, an eperne, and various other glassware. Est.£20-£40



130 A Lalique Art Deco silver and crystal Masque Du Femme ring, bordered by blue enamel piping with inset jet on each shank. Est.£200-£400



131 An early 20th century Art Deco style ring with central diamond, set in platinum setting, on an 18ct yellow gold shank, 2.8g. Est.£200-£400



132 A vintage Ola Marie Gorie sterling silver brooch, wishbone pattern. Est.£20-£30



133 Ola Gorie sterling silver earrings. Est.£20-£40



134 A Charles Horner Art Nouveau silver and enamel 'dragon fly' brooch. Est.£40-£60



135 A silver child's bangle, maker GJ. Est.£30-£40



136 An Ola Gorie sterling silver and enamel brooch in the original box. Est.£30-£50



137 Ola Gorie sterling silver dolphin brooch. Est.£30-£40



138 Ola Gorie sterling silver brooch, lily design. Est.£20-£40



139 A pair of Charles Horner silver engraved cuff links, Birmingham 1926. Est.£30-£50



140 A vintage Ola Gorie sterling silver 'Masonic' crescent brooch. Est.£40-£60



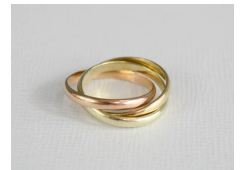
141 A Charles Horner Art Nouveau rolled gold brooch with citrine inset. Est.£40-£50



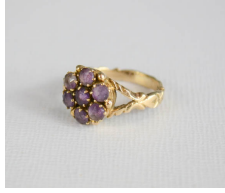
142 A 9ct gold sapphire and diamond Victorian ring. Est.£30-£40



143 A Russian three band wedding ring, in yellow, white and rose gold. Est.£30-£50



144 A yellow metal and amethyst cluster flower head ring.
Est.£20-£40



145 A pair of pearl earrings.
Est.£10-£20



146 A silver and amber ring, and a silver Russian three band wedding ring.
Est.£10-£20



147 A 9ct gold ladies signet ring, 1.9g.
Est.£10-£20



148 A 9ct gold ring, 2.8g.
Est.£20-£30



149 A 9ct gold and Brazillian blue topaz ring, approximately 12cts.
Est.£400-£600



150 A 9ct gold ring, with 'feathered' engraved decoration, 4.3g.
Est.£40-£60



151 A 9ct gold and chip diamond set ring, 2.6g.
Est.£20-£40



152 A yellow metal full sovereign ring 1912, size J. 8.0g.
Est.£80-£120



153 A 22ct gold wedding band, size J, 2.9g.
Est.£60-£90



154 An 18ct gold brooch / pendant, the portrait miniature depicting a woman with feather headdress embellished with diamonds and wearing a necklace set with small emerald, within an engraved and ropetwist border, with safety chain, 13.9g.
Est.£80-£120



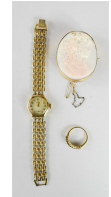
155 A pair of yellow metal hoop earrings, set with amethyst and paste, 4.1g.
Est.£10-£20



156 Two pairs of yellow metal earrings, 3.9g.
Est.£10-£20



157 A Rotary ladies wristwatch, together with a yellow metal and sapphire ring and a yellow metal cameo brooch; portrait of a lady.
Est.£20-£30



158 A Waltham gold plated pocket watch.
Est.£30-£50



159 Two 9ct gold necklaces, 4.5g
Est.£20-£40



160 A 9ct gold necklace and matching bracelet, with spiral twist design, 5.8g.
Est.£40-£60



161 A 9ct gold St Christopher pendant and chain, 9g.
Est.£70-£90



162 A Mid 19th century Italian carved lava brooch or pendant, circa 1840.
Est.£20-£30



163 A silver charm bracelet, with heart form clasp and chain, 3.13toz.
Est.£30-£40



164 A silver bangle with chased design, GJ maker.
Est.£30-£50



165 A silver fob bracelet, with silver and other charms.
Est.£40-£60



166 A silver coin pendant necklace, and a gold plated locket.
Est.£10-£20



167 A silver and marcasite dragonfly
Est.£20-£30



168 A silver and marcasite spider.
Est.£20-£30



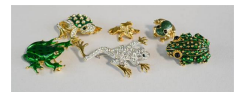
169 A silver compact bearing the inscription 'Pat, With Love, DK, 17th Nov 62'.
Est.£30-£40



170 A group of miscellaneous items including mother of pearl buttons, white metal Chinese buttons, silver filagree items.
Est.£20-£30



171 A group of six frog brooches, enamelled, diamante etc.
Est.£20-£30



172 An AE Williams trinket box in the form of a seated frog.
Est.£20-£30



173 A quantity of costume jewellery, with jewellery box, to include three malachite bangles, simulated pearl necklace, two silver bracelets.
Est.£10-£20



174 A silver charm bracelet and enamel charms, together with a silver ingot pendant necklace, and a Maltese cross pendant necklace, 3.22toz.
Est.£30-£40



175 A group of silver bangles, earrings, bracelet with heart form charm, a horse pendant necklace etc.
Est.£10-£20



176 A group of costume jewellery.
Est.£10-£20



177 A silver filagree pendant, a necklace, a silver pendant in the form of a rose and paste jewellery.
Est.£10-£20



178 A group of three Art Deco compacts one Stratton example.
Est.£40-£60



179 Four vintage compacts, two with marcasite inset bows decorating the top.
Est.£20-£40



180 A group of compacts, a Kigu example, with initials CBH to the top, lipstick holder, and mirror set, and matching compact.
Est.£30-£40



181 A group of compacts including Stratton, Kigu etc.
Est.£20-£30



182 A group of three Estee Lauder compacts, one in the form of a pocket watch.
Est.£20-£30



183 A 1930s Art Deco hand painted Chinoiserie decorated ladies card case.
Est.£20-£40



184 A Burberrys compact in original box.
Est.£30-£40



185 A group of marcasite and silver brooches, a ring with heart to the centre, and a necklace.
Est.£20-£30



186 A group of costume jewellery, jewellery box and cruet set.
Est.£20-£30



187 A Victorian pair of pince nez A/F, a steel screw implement with two pointed heads, and leather case, two watches and a turquoise and pearl necklace.
Est.£30-£40



188 A Dirk Bikkembergs sterling silver, chain bracelet in the original box.
Est.£20-£40



189 A cultured pearl necklace and earrings set.
Est.£10-£20



190 A quantity of cufflinks.
Est.£10-£20



191 Three lighters; one Ronson, together with a group of commemorative coins.
Est.£10-£20



192 A silver charm bracelet, with various style silver frog charms.
Est.£20-£40



193 A Swarovski wristwatch, with leather strap, square face, in the original box with certificate.
Est.£40-£60



194 A 18ct gold cased wristwatch, with leather strap. A/F
Est.£150-£200



195 A Rotary silver and marcasite ladies wristwatch.
Est.£30-£50



196 A Longines silver pocket watch and fob.
Est.£40-£60



197 A Seiko Quartz gentleman's wristwatch with original box, and an Omega ladies watch.
Est.£20-£30



198 An early 20th century marcasite ladies cocktail wristwatch.
Est.£100-£200



199 A IWC Schaffhausen style gents wristwatch in case.
Est.£20-£40



200 A silver pocket watch and a further pocket watch embossed with hunting dog.
Est.£10-£20



201 A group of various wristwatches including Sekonda, Lorus, Citizen and other examples.
Est.£20-£30



202 A silver teapot on stand with burner, Mappin & Webb, (burner by a different maker), 37.90toz.
Est.£700-£900



203 A silver trophy Birmingham 1922, raised on an ebonised plinth, 10.01toz.
Est.£70-£90



204 A silver trophy, London 1914, engraved Spilsby Foal Show 1914, Presented by ED Newman ESQ for Champion Foal, raised on an ebonised plinth, 14.74toz.
Est.£120-£140



205 A silver trophy, engraved Mrs Turner Miss Short 1913, LP Abbott, Miss Short, 1914, 5.88toz.
Est.£40-£60



206 A silver trophy, Challenge Cup, Gosberton Mare & Foal Show, 1921, Birmingham 1920, 10.28toz.
Est.£80-£120



207 A silver two handled bowl, 4.41toz.
Est.£20-£40



208 A silver pedestal trinket dish, together with a white metal dish in the form of a flower.
Est.£20-£40



209 A silver teapot, Birmingham, makers initials SL, 15.84toz.
Est.£80-£120



210 A miniature silver tea service, 2.12toz.
Est.£30-£50



211 A glass and silver rimmed match striker and a silver salt.
Est.£30-£40



212 A silver cigarette case, Chester 1926, machine engraved and initials.
Est.£30-£50



213 A silver presentation dish, Birmingham 1966, inscribed, Colbourne Ltd Trowbridge, in original box.
Est.£10-£20



214 A silver Christening set; egg cup and spoon in original box, Sheffield 1919, and a presentation spoon with the date 28-11-43 engraved to the handle, initials to the front. 1.89toz total
Est.£20-£30



215 A silver Christening set; bakelite lined egg cup Birmingham, and spoon Sheffield 1919, together with a shaker London 1916, 2.85toz.
Est.£20-£40



216 A silver cruet set, in the original blue glass liners and presentation box, Birmingham 1937, 4.10toz.
Est.£40-£60



217 A set of white metal coffee spoons, with elephant and palm tree handles, together with a horn handled cake server.
Est.£20-£40



218 A set of Edwardian silver plated sauce pots, with spoons in the form of shovels.
Est.£20-£40



219 A silver pair of sugar tongs together with a Victorian shoe horn a button hook with matching silver handles.
Est.£20-£40



220 A silver clothes brush, hair brush, and button hook, embossed with cherubs.
Est.£20-£40



221 Two silver plated candleabra and a gimble mounted table lamp.
Est.£20-£40



222 A silver plated three branch candleabra.
Est.£50-£80



223 A Veuve Cliquot ice bucket.
Est.£20-£40



224 A small steel dome top trinket casket, with chased decoration.
Est.£20-£40



225 A Vintage WMF leaf design bowl, silver plated.
Est.£20-£40



226 A pair of 19th century silvered copper relief plaques depicting Pan, both inscribed 7Bte Germain, 1868, L.Oudry Pre Editeur, 30cm diameter.
Est.£100-£200



227 A group of silver plateware, to include a part tea set including tea pot, sugar bowl and milk jug, a toast rack, tea pot and various other items.
Est.£20-£40



228 A silver page marker with thistle form finial, a group of silver and white metal spoons / flatware, a vesta case, and three glass jars.
Est.£20-£30



229 A group of silver plateware to include Butlers Table cutlery in original box, jug and slop bowl, trophies, flower frogs etc.
Est.£20-£40



230 A silver hairbrush embossed with Art Nouveau style flowers and leaves, Birmingham 1906, a silver photograph frame embossed with poppies, Birmingham 1903 a leather purse with floral embroidery inside, and a silver christening mug, Birmingham 1925.
Est.£30-£50



231 A group of silver plate lidded tureens, a Victorian silver plated tea caddy, a teapot, kettle stand, and vegetable dish.
Est.£30-£50



232 A silver plated punch bowl and cocktail shaker.
Est.£20-£40



233 A silver plated circular wine tray, engraved with chased decoration, a silver mirror and brush, and a compact.
Est.£20-£40



234 A group of silver plateware, together with a silver candlestick.
Est.£20-£30



235 A group of boxed silver plated cutlery sets.
Est.£20-£30



236 An oak cased canteen of cutlery.
Est.£20-£30



237 A group of boxed cutlery sets.
Est.£20-£30



238 Three pewter tankards, one with a glass base, a Walker & Hall mug, a silver plated toast rack, egg cup, cigarette case, perfume bottle with stopper, boxed cake fork set, chrome lighter.
Est.£20-£40



239 An Edwardian mantle clock in slate and marble, with Arabic dial.
Est.£20-£40



240 An oak case wheel barometer.
Est.£40-£60



248 A bronze pelican and Pharaoh figure,
with black slate base, 31cm high.
Est.£70-£100

241 A slate mantle clock, with Roman
Numeral dial, 12cm high.
Est.£30-£50



249 A bronze staffie dog, 21cm high.
Est.£80-£120

242 An oak cased wall barometer.
Est.£10-£20



250 A bronzed female figure, 36cm.
Est.£100-£120

243 A mahogany mantle clock, marquetry
oval, Arabic dial, 27cm high.
Est.£30-£50



251 A bronze figure of a discus thrower, E
Margoton, green marble base, 45cm
high.
Est.£120-£140

244 A German oak cased mantle clock, with
Arabic dial, with key and pendulum.
Est.£20-£30



252 A bronze figure group, two wrestling
bears, 19cm high.
Est.£60-£90

245 A Spelter mantle clock, with arabic dial
in the form of a horse with trough.
Est.£40-£60



253 A spelter cold painted dog, C Valton
signature to the base.
Est.£30-£50



246 A bronze sculpture by the Morris Singer
Art Foundary Ltd, London; Horse &
Foal.
Est.£400-£600



254 Two bronzed figures, an accordion
player, and a donkey 10cm high,
attributed to Walter Bosse, Hagenauer.
Est.£10-£20



247 A resin figure group, figure in the
embrace.
Est.£10-£20

255 An early bronze candlestick, 7½cm
high.
Est.£20-£40



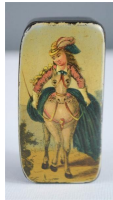
256 An early iron clad casket.
Est.£150-£250



264 A specimen wood box/cover for threads, together with a black lacquered pencil box depicting cartoon to the lid.
Est.£20-£30



257 A 19th century snuff box, with 'erotic' comical hand painted lid, depicting a 'lady on horseback'.
Est.£40-£60



265 A Victorian work box, with interior velvet lined slope, and inkwell compartments.
Est.£20-£40



258 A 19th century horn snuff box, engraved Thomas Ince, oval form.
Est.£50-£80



266 A 19th century rosewood and mother of pearl inlaid box.
Est.£20-£30



259 A 19th century horn snuff box, oval form, Cairn Gorme.
Est.£50-£80



267 A 19th century mahogany writing slope.
Est.£150-£250



260 A 19th century horn snuff box, oval form, engraved John Barnett, 1828.
Est.£50-£80



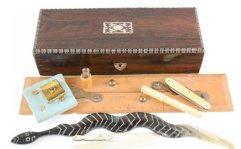
268 A tin trunk labelled 'Woodhouse Charity'.
Est.£20-£30



261 A 19th century horn snuff box, oval form, engraved J Davies Hendy Cynwyd.
Est.£50-£80



269 A rosewood box, mother of pearl inlay, with bone carved needle holder, pen knives, mother of pearl page turner, horn carved snake, rule etc.
Est.£20-£40



262 A 19th century horn snuff box, oval form, engraved with initials RE.
Est.£50-£80



270 A large wooden lidded bowl, hand painted and incised with floral decoration. 33cm diameter.
Est.£10-£20



263 A 19th century horn snuff box, with silver plaque WOR engraved.
Est.£50-£80



271 Two treen spoon racks, one in the form of Australia, the other in the form of the UK.
Est.£20-£30



272 Two 19th century work boxes.
Est.£20-£30



273 An Indian inlaid box with painted scene to the dome top.
Est.£20-£30



274 A Victorian pine box containing a greenhart handled tool and a leather arch punch.
Est.£20-£40



275 An apprentice piece 17th century style oak buffet, with spindled upper rail, roundels to the front panels and punchwork decoration, 31 by 28 by 13cm.
Est.£40-£60



276 Two treen wall brackets and one small shelf with Gothic style brackets.
Est.£10-£20



277 A Victorian table set of two drawers, with carved front brackets., 20 by 30 by 25cm.
Est.£30-£50



278 A 19th century rosewood work box, black leather inset slope, two glass inkwells, 15 by 40 by 23cm.
Est.£20-£40



279 A black lacquered tray depicting two birds, 36 by 58cm.
Est.£20-£30



280 An apprentice piece mahogany bureau, the fall front with fitted interior, raised on ogee bracket feet, 48 by 41 by 26cm.
Est.£100-£200



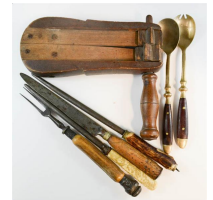
281 An oak two door cupboard with beaded edges and borders, 33 by 55 by 35cm.
Est.£20-£40



282 A mahogany deed box, circa 1900.
Est.£20-£30



283 A treen clacker, together with horn handled knife sharpeners, servers etc.
Est.£20-£30



284 An apprentice piece tilt top table with octagonal top.
Est.£30-£50



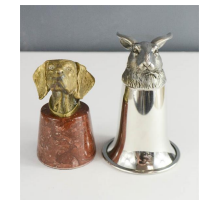
285 A Vintage treen hat widening block.
Est.£30-£50



286 An early horn powder flask, and a copper powder flask embossed with traces of pheasants.
Est.£30-£50



287 A steel stirrup cup with hare form top, and a brass paperweight in the form of a hound head.
Est.£30-£50



288 A brass candle snuffer, a leather box and a leather cased sewing kit, and a silver plated bon bon dish with liner.
Est.£20-£30



296 A Waterman pen set, boxed.
Est.£10-£20



289 A group of collectables, including a brass fireplace, cat, a group of model antique shoes, and a part Indian printing block.
Est.£10-£20



297 Two lighters and a cigar cutter.
Est.£20-£30



290 A carved top shoe horn, Porsyn hour glass, a German dictionary pair, and an oak inkstand.
Est.£20-£40



298 A champeve enamel thimble in the form of a birds head.
Est.£20-£40



291 An amber glass model of a dog, a brooch in the form of glass grapes, a clam shell form purse, a silver 10 cents coin bracelet and other collectables.
Est.£20-£40



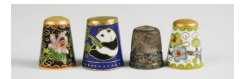
299 A collection of thimbles together with its wall display stand.
Est.£20-£30



292 A collection of model frogs, one glass, jade, metal etc.
Est.£20-£40



300 Three champeve enamel thimbles; one depicting a panda, and a silver thimble.
(4)
Est.£20-£40



293 An onyx model frog, and a table lamp with coloured glass shade, the base in the form of two frogs.
Est.£20-£30



301 A silver and ivory 19th century walking cane.
Est.£60-£90



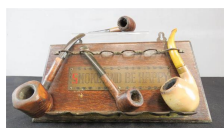
294 Two pipes, one in the form of a face.
Est.£20-£30



302 A group of tins, boats, and a leather tape measure.
Est.£20-£30



295 A pipe rack and pipes.
Est.£10-£20



303 A quantity of sewing implements and accessories, including buttons, cotton reels etc.
Est.£10-£20



304 A black Bakelite phone.
Est.£30-£50



312 A large section of Desert Rose 15cm high, and an ashtray carved out of rock.
Est.£10-£20



305 A bakelite continental telephone, Schweppes Ltd Soda Water, and a green glass retro dressing table dish and candlestick.
Est.£30-£40



313 An 18th century Italian carved putto / cherub head, raised on a modern metal stand, 31cm high, 20cm wide (with the stand).
Est.£200-£400



306 Two commemorative Bells Whisky bottles, with contents, one commemorating the Birth of William.
Est.£30-£50



314 A metallic corinthium needle form column painted with a simulated wood finish, 58cm high.
Est.£40-£60



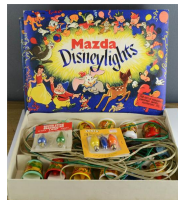
307 A group of whisky, four examples of Dimple bottles with contents and some original boxes.
Est.£30-£50



315 A plasterwork bust of David.
Est.£20-£40



308 A 1950s Mazda Disneylights set of christmas lights, in the original box.
Est.£30-£50



316 Two plasterwork cherub figures.
Est.£10-£20



309 Two inkwells, desk stands, bowling ball set, and binoculars.
Est.£10-£20



317 A wooden carved horse head.
Est.£30-£40



310 A group of commemorative spoons and The Miniature Crown Jewel Collection.
Est.£10-£20



318 A pair of brass horses.
Est.£20-£30



311 A large collection of commemorative spoons, some in presentation boxes.
Est.£30-£40



319 A trench art picture frame, Reims 1917 containing a black and white original postcard.
Est.£30-£50



320 A pair of small brass candlesticks, ormolu.
Est.£100-£200



321 A group of four trench art ash trays together with brass cat head, three swallows, two horseshoes.
Est.£20-£30



322 A group of copper and brassware including a coal bucket, jugs and tray.
Est.£20-£30



323 A group of brassware; pair of barleytwist candlesticks, large vase with handles, Victorian wash jug, print of an engraving of Marble Hall Middlesex.
Est.£10-£20



324 A GAH J Gusden of South Audley Street, warmer, together with a copper dish raised on brass paw feet, stamped to the top EH DE, and a Nottingham copper mug.
Est.£20-£40



325 An Arts & Crafts copper tray with hammered and shaped sides.
Est.£20-£40



326 A pair of brass andirons.
Est.£20-£40



327 A Radio-Malt set of scales together with a corresponding plaque; Day & Millnard Patentees, Birmingham.
Est.£80-£120



328 The Automatic Scale Co Ltd, Manchester-London set of scales to weigh 20lb, no 520332.
Est.£60-£90



329 A group of 45s, cased including Top Gun, Cliff Richard etc.
Est.£10-£20



330 A Bush Discassette late 60s/70s a power pack, a Ford Carpi cassette player and Acetronic travelling chess set.
Est.£20-£30



331 A Piecar radio telephone in a suitcase.
Est.£10-£20



332 A Sinclair ZX with transformer, joystick, and interface, together with a quantity of cassette games, cassette player and leads.
Est.£20-£30

333 A bongo set; two large, and one double bongo.
Est.£20-£40



334 A large Vintage radio, 3D sound, no.3028.
Est.£20-£40



335 A Violin with two bows and a case.
Est.£20-£40



336 A brass and glass 19th century lantern.
Est.£150-£200



337 An arched brass lamp standard together with matching wall lights.
Est.£30-£50



338 A brass standard lamp with adjustable arm, 152cm.
Est.£20-£40



339 A Lincolnshire Bugle; to Bugle R. Archer of Lincoln, stamped Ypres 1914, and bearing the Lincoln Sphynx cap badge to the front.
Est.£120-£140



340 A pewter lamp in the form of a blue bell 41cm high, with an opaque pale blue glass shade, together with a brass lamp base and two wall lights.
Est.£30-£50



341 A modern French style painted chandelier and matching wall lights.
Est.£20-£30



342 An antique railway lamp.
Est.£30-£40



343 A teeen stethoscope, possibly cedar wood.
Est.£20-£40



344 A group of Air Training Corps caps, badges, buttons, belt etc.
Est.£20-£40



345 A No.1 uniform and grey coat, Air Training Corps.
Est.£30-£40



346 A Webley 'Junior' 177 air pistol, Mark 1, no 445, with break action spring, circa 1925-27, stamped to the barrel 'The Webley Junior 177 Webley & Scott Ltd, Birmingham'.
Est.£100-£200



347 An Italian dagger, with Fascist party symbol to the handle.
Est.£20-£40



348 A Vintage Yamaha for Music holdall in red.
Est.£10-£20



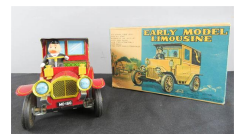
349 A complete set of golf clubs and trolley.
Est.£30-£50



350 A Corgi boxed car.
Est.£20-£30



351 An Earl model limousine, Automatic Multi Action, made in Japan, with the original box.
Est.£40-£60



352 A yellow Schuco 1670 Grand Prix race car.
Est.£20-£40



360 A Hornby Duplo Electric Train set: Passenger Train 'Silver King' BR ER, EDP11, and G25 LMR Freight Train.
Est.£80-£120



353 A Dinky Toys Rolls Royce silver Wraith no 150 model with the original box.
Est.£20-£40



361 A bagatelle board together with the balls, score board and some snooker balls.
Est.£30-£40



354 A Corgi Bedford OB Coach.
Est.£10-£20



362 A group of Dinky and other model cars, some boxed.
Est.£40-£60



355 A Schuco Studio 1050 red racing car model no 2144461.
Est.£20-£40



363 A model lifeboat, 48cm long.
Est.£10-£20



356 A group of model vehicles, including Dinky tractor and Dinky crane.
Est.£10-£20



364 An antique teddy bear, 30cm high.
Est.£20-£40



357 A group of hockey sticks, badminton rackets and tennis rackets.
Est.£10-£20



365 Two porcelain dolls in original box, together with a golly.
Est.£20-£30



358 A Wembley game The Thrilling Cup Tie game.
Est.£20-£30



366 A large inflatable clown.



359 A quantity of board games, including 'The Really Nasty Horse Racing Game', 'Millionaire', chess set etc.
Est.£10-£20



367 A group of halloween type costumes.



368 A group of halloween costumes including a gimp mask.



376 A large grey devil mask.



369 A group of six large blow up footballers.



377 A large red devil mask.



370 A blow up Mr Man.



378 A Darlek voice changing mask. Est.£20-£40



371 A box of masks, arms and hands, monster faces, halloween faces etc.



379 A large Inflatable Herman the monster.



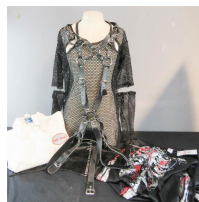
372 A box of party hats and wigs.



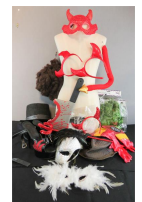
380 A group of Circus stilt trousers.



373 A group of bondage outfits including a cat suit.



381 A group of hats, wigs, head dresses, shoes and other dressing up attire.



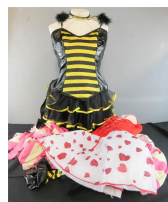
374 A group of costumes including camo outfit.



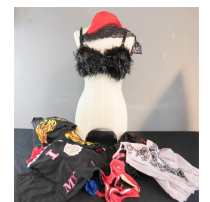
382 A large inflatable green alien.



375 A group of costumes to include a bee.



383 A bag of lingerie, ladies corsets etc.



384 A group of clothing to include a fox tail brush, pair of jodpurs, a Repton Wool blazer circa 1960, and a black leather bomber jacket.
Est.£20-£30



392 A blue Parigi dress, size 8, a black and white Dollyrockers designed by Sambo, and a size 14 dress, Suky London. (3)
Est.£20-£30



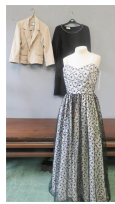
385 Two Gina Bacconi evening dresses and a Gina Bacconi jacket. a Helena Soreel Jacket.
Est.£20-£40



393 A Jocavi jacket, size 12, a Betty Barclay jacket, a black hooded scarf with fake fur trim, and a black Goldix jacket. (4)
Est.£20-£40



386 A cashmere Kristeussaen Du Norde jacket, and a Kaunang Laksana evening dress, Apanage dress and Stills dress.
Est.£20-£40



394 A cotton jacket, a Brodie cashmere yellow and grey jumper, and a small Paul Smith jumper. (3)
Est.£20-£30



387 A pair of Victorian children's night dresses.
Est.£10-£20



395 An LK Bennett evening dress, a This is Religion evening dress with butterflies and Phase Eight evening blouse. (3)
Est.£20-£40



388 A Saddle Master Tweed riding jacket and a Pytchley Parr & Co of Leicester riding jacket.
Est.£40-£60



396 A faux fur coat.
Est.£10-£20



389 A Foster & Son riding jacket, and a Parr & Co Riding jacket in tweed. (2)
Est.£40-£60



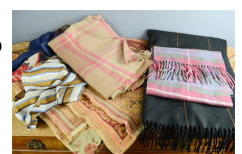
397 Two pairs of riding boots, Stylo size 10 and Regent size 6½.
Est.£30-£50



390 A Goldix imitation leather jacket and a faux fur jacket by the Jayley collection, and a fur jacket. (3)
Est.£30-£50



398 A group of scarves, including a Laura Ashley, a Marks & Spencer checkered scarf, a black check shawl, and a group of small scarves.
Est.£20-£40



391 A James Lakeland jacket / coat and a Mandy Marsh Coat and scarf, size 12. (2)
Est.£30-£40



399 A group of embroidered linen and other table cloths.
Est.£10-£20



400 A pair of Lulu Guinness shoes, size 38½ with original bag slip together with a pair of Ashitalia purple suede court shoes, size 39.
Est.£30-£40



401 A pair of Mary G Ultimate collection blue suede court shoes, size 6.
Est.£10-£20



402 A pair of black brogues, size 9.
Est.£20-£40

403 A pair of Ferranama black gents shoes, with fur lining, made in Italy, size 7.
Est.£20-£30



404 Two scarves and a pair of black jeans by DonDup.
Est.£20-£40



405 A pair of Dan Post Lizard cowboy boots in black.
Est.£30-£50



406 A pair of Petrie riding boots, size 6½
Est.£20-£40



407 A pair of Tom Ford black shoes, with shoe bag, size 9.
Est.£40-£60

408 A pair of black London brogues, size 8.
Est.£20-£40

409 A Pal Zileri jacket silver grey size 48, and a William Hunt jacket.
Est.£20-£40

410 A John Varvatoe USA Bomber jacket and an Alexander McQueen white zip up shirt.
Est.£30-£40



411 A Paoloni jacket in blue, and a black Paoloni dinner jacket. (2)
Est.£20-£40



412 A Guess black velvet jacket, Z Segna black dinner jacket.
Est.£20-£30



413 A black Ungaro shirt, a Casablanca body warmer.
Est.£10-£20



414 A pair of titanium Dirk Bikkemberges glasses, three belts.
Est.£20-£30

415 A black jacket Nicolas Andreas Taralis, a Burberry purple silk dinner jacket and a cream dinner jacket.
Est.£30-£40



416 A pink Lord jumper, size 48, with 75% merino wool.
Est.£30-£50



417 A green Lord jumper, size 44, with 75% merino wool.
Est.£30-£50



418 A bottle opener in the form of a shotgun, a pair of boot pulls, Drew & Sons Piccadilly Circus, and two Larusmiani U-bolts.
Est.£20-£40



419 A Victorian top hat and original case, by Jones & Dunn.
Est.£40-£60



420 A Taxidermi Deer Slot 'Quantock Stag Hounds Killed at Cothelstone, April 6th 1904.
Est.£30-£40



421 A Taxidermi Deer Slot, French, inscribed Equipage De Songeons, Foreit De Breteuil, 6th Dec 1932.
Est.£30-£40



422 A Taxidermi Fox, raised on a naturalistic base.
Est.£100-£200



423 A Kiev 35mm Rangefinder camera, and 135mm telephoto lens, a Mamiya RB67 Mid-Format camera with accessories, and a quantity of Cokin filters and other accessories, together with a hard camera case.
Est.£50-£80



424 A quantity of photographic equipment including filters.
Est.£10-£20



425 A Pentax ME Super 35mm camera together with a 50mm and a 28mm lens and a 75-150mm Pentax 200m lens.
Est.£30-£50



426 A collection of various coins including presentation packs, Royal Mint and other GB antique coins.
Est.£20-£40



427 The Improved Postage stamp album, containing various stamps.
Est.£20-£40



428 A quantity of commemorative coins including a Perth Mint Medallion.
Est.£10-£20



429 A Full gold Sovereign, 2000.
Est.£180-£220



430 A half gold sovereign, 1982.
Est.£70-£100



431 A group of 70 Lady Bird books, including Fiction, Science Fiction, Early Learning examples.
Est.£40-£60



432 A group of 72 Lady Bird books, including Fiction, Science Fiction, Early Learning examples.
Est.£40-£60



433 A group of Rupert the Bear annuals.
Est.£20-£40



434 Habitat 1974 Annual catalogue, and English Style by Suzanne Slesin & Stafford Cliff, photos by Ken Kirkwood.
Est.£10-£20



435 Photographs '68 by Walter Herdag, portrait of an Idea Rosenthal Studio-Line photo, Jay Maisel and three Design and Direction '65
Est.£10-£20

436 English Style by Suzanne Slesin & Stafford Cliff, photos by Ken Kirkwood. and French Style by Suzanne Slesin & Stafford Cliff, photos by Jaques Dirand.
Est.£10-£20



437 The Gillette Cricket Cup Final, Lancashire V Warwickshire at Lords, 2nd September 1972 and a Test-Ausweis certificate badge.
Est.£10-£20



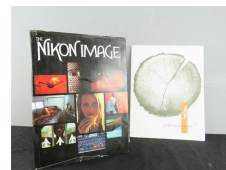
438 The Art of the Shakers by Michael Horsham, The Art of Hollywood by John Hambley, Zanotta Catalogo 1978-1979, Ansel Adams The Making of 40 Photographs, Eye For Colour by Bernat Klein.
Est.£10-£20



439 Thirteen Champion Papers, Herald.
Est.£10-£20

440 The Architectural Photography of Hedrich-Blessing, The Push Pin Style, 1970, No2 The Concerned Photographer, Marc Ribound Bruce Davidson, Communication Arts Sept 1991, Nov 1991, Aug 1991.
Est.£10-£20

441 The Nikon Image, Omrton Beebe, Ken Briggs, Henry Wolf among others, Festival of Firsts, June 1997.
Est.£10-£20



442 Kostbare Puppen, Wiengarten Brecht, boxed.
Est.£10-£20



443 Postcards from the Boys by Ringo Starr, The Awards The Association of Photographers, eighth award book.
Est.£10-£20



444 Beautiful Joe and Beautiful Joes Paradise Sequel, By Marshall Saunders.
Est.£10-£20



445 A Radley purse, black leather with dog and butterfly decoration.
Est.£20-£30

446 Close Ups Through a Child's Eyes by Bert Tomas.
Est.£40-£60



447 A box of theatre programs; Tommy Steel, Puss in Boots, Globe Theatre, There's a Girl in my Soup etc.
Est.£20-£30



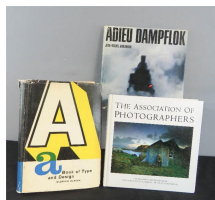
448 A Grantham Football Club program, Jan 7th 1967, Grantham V Oldham Athletic. Est.£10-£20



456 A selection of Childrens books, the Tale of Timmy Tiptoes by Beatrix Potter, Pips First Expectations, Five weeks in a Balloon. Est.£20-£40



449 Adieu Dampfloek by Jean Michel Hartman, The Association of Photographers, Seventh AFEAP awards book, a Book of Type and Design Oldrich Hlavsa. Est.£10-£20



457 Common British Grasses & Legumes, J Thomas and L Davies, together with Our Woodlands, Heaths & Hedges by WS Coleman, George Routledge & Sons, New York. Est.£20-£40



450 Painters of Bauhaus, by Marlborough, 30 Salvador Dali postcards by Taschen, Royal Academy illustrated 2002 Royal Academy of Arts, Charles Rene Mackintosh, Richard Drew publishing. Est.£10-£20



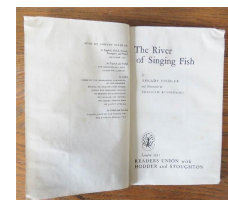
458 A Midsummer Nights Dream, Israel Gollancz, JM Dend & Co. Est.£20-£40



451 An album of postcards including black and white and colour examples. Est.£20-£30



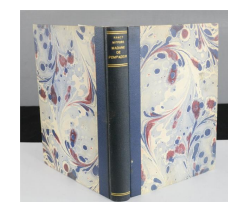
459 Books: The River of Singing Fish by Arkady Fiedler, illustrated by Zdzislaw Ruszkowski, Hodder & Stoughton. Est.£20-£40



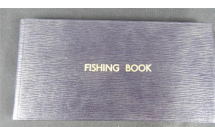
452 A quantity of cigarette cards, mostly part sets, some early. Est.£20-£30



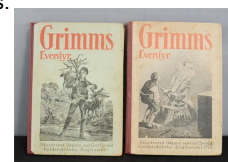
460 Madame de Pompadour by Nancy Mitford, Danish Edition. Est.£30-£50



453 A leather bound antique Fishing book ledger. Est.£20-£30



461 Grimms Fairytales; two Danish Editions. Est.£50-£80



454 A group of books to include Oliver Cromwell, The Story of the Gypsies etc. Est.£10-£20



462 A collection of 86 copies of When Saturday Comes, dating from October 89- February 97. Est.£10-£20



455 A group of antique books, to include Discourses by Rev Richard Warner printed by R Cruttwell, Circle of the Sciences, Herodoti and Pilkington Evangelical History, William Bower and others. Est.£20-£40



463 A box of Progressive Trump Whist Scoring cards, complete with pencils and tassel, and a vintage Christmas card. Est.£20-£40



464 Victoriana: printed ephemera to include printed cuttings.
Est.£20-£30



465 A 17th century hand tinted map of 'Lyncolne' Lincoln, Lincolnshire.
Est.£60-£90



466 D Armstrong, A Leeds Gas Lamp 1982, original pencil on paper, 13 by 10cm.
Est.£50-£80



467 Duncan Armstrong, Airton Near Skipton, Padiham, 1981, original pencil on paper, 15 by 10cm.
Est.£50-£80



468 Duncan Armstrong, one Town End, Padiham 1980, original pencil on paper, 13 by 10cm.
Est.£50-£80



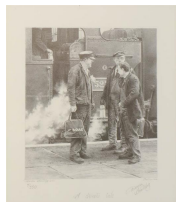
469 Duncan Armstrong, A Snicket in Skipton, Padiham 1980, original pencil on paper, 13 by 10cm.
Est.£50-£80



470 Duncan Armstrong, Gate Edn, Padiham, 1983, original pencil on paper, 10 by 15cm.
Est.£50-£80



471 Duncan Armstrong, A Drivers Tale Padiham 1994, limited edition print, signed in pencil and titled to the margin, 7/250.
Est.£20-£40



472 S. Warburton, Church with dark skies, watercolour and ink, 1983, 30 by 40cm.
Est.£20-£40



473 VC Ellerton, village scene with figures to the fore, pencil and chalk on paper, 30 by 23cm.
Est.£20-£40



474 S Warburton, The Road To Keighley, Hebdon Bridge, '84, watercolour, 33 by 40cm.
Est.£40-£60



475 Rowena Brassey (20th century): pair of nude studies, pastel on paper, dated 1973, signed in pencil.
Est.£70-£90



476 Three 16th century sanguine drawings.
Est.£600-£800



477 Adrian Thompson (20th century): Locomotives, oil on canvas, 75 by 100cm.
Est.£600-£800



478 Adrian Thompson (20th century): ship on choppy seas, oil on canvas, 75 by 100cm.
Est.£500-£800



479 Adrian Thompson (20th century): Crusader SH173, watercolour, 46 by 33cm.
Est.£80-£120



480 E.K Redmore (19th century): moored fishing boats at twilight, 44 by 75cm. Est.£100-£200



488 J Welbrock-Smith, Highland Solitude, oil on canvas. Est.£20-£30



481 Adrian Thompson (20th century): Arctic Corsair, 50 by 74cm. Est.£150-£250



489 Stamford Meadows, limited edition print 287/500. Est.£10-£20



482 J Harvey (20th century): Galleons at sea, 50 by 60cm. Est.£50-£80



490 Robert Ixer (20th century): two oil on canvas landscapes, one oval. Est.£20-£40



483 E A Redmore (19th century): white cliffs with fishing boats and figures to the fore, 50 by 75cm. Est.£200-£400



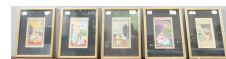
491 A oil on porcelain plaque, portrait of a girl wearing a bonnet, holding a dove. Est.£50-£80



484 Oil on canvas, laid onto board, 19th century, unsigned, lightning strike in stormy seas, 47 by 77cm. Est.£200-£400



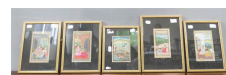
492 Five Indian hand painted book leaves. Est.£30-£50



485 Joie Welbrock-Smith, Cretan Vineyards and The Old French Mill, oil on board. Est.£20-£40



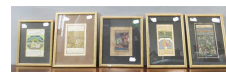
493 Five Indian hand painted book leaves. Est.£30-£50



486 George Coppard, Beatrice Webb House, and a landscape, both oil on board. Est.£20-£30

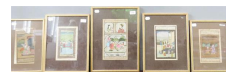


494 Five Indian hand painted book leaves. Est.£30-£50



487 Two watercolours, one by ET Edwards, the other by S Nicholson. Est.£10-£20

495 Five Indian hand painted book leaves. Est.£30-£50



496 A pair of prints depicting classical studies of fountains.
Est.£20-£30



504 A group of six hunting prints.
Est.£10-£20



497 Vic Millington, 2012, Approaching Padstow, Cornwall, original watercolour, railway style, based on a photograph by Derek Cross, signed, 57 by 77cm.
Est.£50-£80



505 A classical style print depicting a Grecian urn. 29 by 20cm.
Est.£10-£20



498 Leighton Maybury, hand painted bone china plaque, No. of Fires - No. 8, dated 1984, detail verso, 34 by 24½cm.
Est.£80-£120



506 Four 19th century tinted prints of a comical nocturnal hunt; 'Ipswich The Watering Place Behind the Barracks-Preparing to Start', 'The Large Field Near Biles Corner - Whoop', 'The Last Field Near Nacton Hearth - Accomplished Smashers', 'The Finish, a Good Five Still Alive', mounted in one long frame.
Est.£40-£60



499 A 19th century print depicting a child feeding a bird beside an open window, 33 by 38cm.
Est.£10-£20



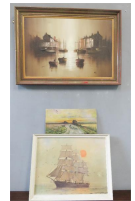
507 A pair of botanical prints, in oak frames.
Est.£20-£30



500 A pair of oil on board, lakeside scenes, circa 1900, 5 by 20cm.
Est.£30-£50



508 Three pictures.
Est.£10-£20



501 Cecil Aldin, hunt scene, hand coloured print on panel, circa 1935, 13 by 18cm.
Est.£60-£90



509 Ronald A Suter (20th century): St Aubins Bay, Jersey, oil on canvas.
Est.£30-£50



502 Cecil Aldin, hunt scene, hand tinted print on panel, 18 by 12cm.
Est.£60-£90



510 James North (20th century): boat studies, watercolour. (2)
Est.£30-£40

503 Cecil Aldin, huntsman on horseback jumping fence, hand tinted print on panel, circa 1935, 12 by 17cm.
Est.£60-£90



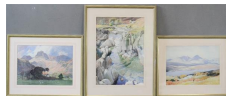
511 Ronald A Suter (20th century): boat studies, oil and wash on board. (3)
Est.£30-£50



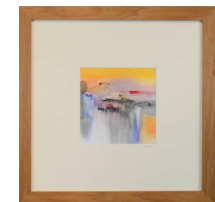
512 Ronald A Suter (20th Century): shipwrecked boat and sailing boat, watercolour. (2)
Est.£30-£50



513 W H Hooper: prints: Down The Cumbrian Esk, October Sun Coniston Water, Langdale Pikes and Oak House Farm. (3)
Est.£30-£40



514 Ronald A Suter (20th Century): boat studies, oil on canvas. (2)
Est.£30-£40



515 Sally Giles, Clifftop, watercolour, 15 by 15cm.
Est.£20-£40

516 A group of local portrait photographs, framed, including a pair of small framed portraits of two brothers.
Est.£20-£30

517 A 19th century tinted print by C Fitzgerald, figures on a boat with house to the background, 39 by 31cm.
Est.£20-£30



518 Hector Wallet, 1941, oil on board, still life of flowers, painted both sides. 60 by 47cm.
Est.£20-£40



519 Andre Asegui, Yorkshire Village scene with black cat on a bridge, oil on board, 37 by 46cm.
Est.£30-£50



520 An oil on board, view of Stamford Roman Catholic Church, Broad Street, in a giltwood frame.
Est.£20-£30



521 A print; Alberto Monseco signed in ink to the margin, 31 by 37cm.
Est.£10-£20

522 A large print depicting fish studies, 94 by 64cm.
Est.£20-£40



523 A set of four hunting prints, in oak frames, bearing Warings of Oxford framers labels verso.
Est.£20-£40



524 A tapestry panel.
Est.£10-£20



525 A white painted toilet mirror.
Est.£10-£20



526 A large pine wall mirror, with deeply moulded frame.
Est.£60-£90



527 A large wall mirror, with wide black frame.
Est.£40-£60



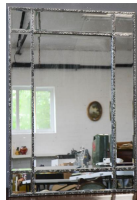
528 A Victorian mahogany toilet mirror.
Est.£10-£20



529 A modern silver gilt wall mirror, with scrollwork frame, 97 by 108cm.
Est.£40-£60



530 A rectangular wall mirror, with silvered frame. 90 by 64cm.
Est.£30-£40



531 A large painted wall mirror, with boldy carved scrollwork frame, 120 by 90cm.
Est.£40-£60



532 A Mackintosh mirror, stained glass, in original presentation box.
Est.£20-£40



533 A modern giltwood wall over mantle mirror.
Est.£20-£40



534 A giltwood wall mirror, with pierced and carved decorated corners.
Est.£40-£60



535 Stewart Lees (1926 - 2006 RSW, ARWS, ROI): acrylic and wash, signed in pencil, 80 by 80cm.
Est.£100-£200



536 Stewart Lees (1926 - 2006 RSW, ARWS, ROI): Venice, acrylic and wash, signed in pencil, 53 by 54cm.
Est.£70-£100



537 A smoky perspex nest of tables, possibly by Habitat.
Est.£30-£50



538 Three designer opaque red glass shades, with spiral line decoration.
Est.£20-£30



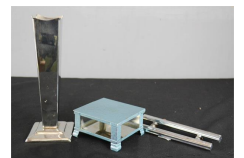
539 Three designer opaque glass shades, with spiral line decoration.
Est.£20-£40



540 A pair of Mid 20th century design hardwood candlesticks.
Est.£30-£50



541 A blue Art Deco blue metal hammered finish box with glass sides, Deco style chrome vase, and two Deco door handles and a perspex hors d'oeuvres tray with twist handle.
Est.£20-£40



542 A quantity of Murano glass, one in the form of a shell.
Est.£20-£40



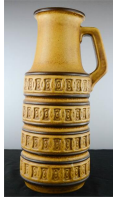
543 An Art Deco orange glass fruit bowl.
Est.£20-£30



544 A Japanese glass vase, blue with iridescent finish.
Est.£40-£60



545 A large West German pottery jug, no. 429-45, 45cm high.
Est.£20-£40



546 A glass top tree root table.
Est.£30-£50



547 A stoneware glazed studio lamp base, coral, and a steel squirrel nutcracker.
Est.£10-£20



548 A rush woven log basket together with bellows, brass fire irons etc.
Est.£20-£30



549 A group of Thomas Kinkade Christmas decorations, and a Painter of Light Lantern.
Est.£10-£20



550 A tapestry panel, red painted glass vase, Egyptian ewer etc.
Est.£10-£20



551 A group of wicker baskets.
Est.£10-£20



552 A tin Veuve Cliquot box, a leather clad ice bucket, a stool and a Victorian needlework foot rest.
Est.£20-£30



553 A quantity of model frogs, one glass, a ceramic frog form jug, and small trinket frogs of various form.
Est.£20-£40



554 A group of ceramic shire horses and carts.
Est.£20-£30



555 A quantity of glassware.
Est.£10-£20



556 A mixed group of ceramics including two porcelain Japanese jar and cover, glass bell, Limoges plate, pair of silver plated candlesticks etc.
Est.£20-£40



557 A miscellaneous group of items including brass vases, treen model animals, pair of porcelain black cats, Navy posters etc.
Est.£10-£20



558 A group of ceramics to include a Palissy sailing boats, Poole examples etc.
Est.£10-£20



559 A large group of miscellaneous ceramics, glass and other items. (4 boxes)
Est.£10-£20



560 A group of Royal Commemorative ware, including ceramics.
Est.£20-£30



561 A quantity of silver plated flatware, mostly Walker & Hall.



562 Mona part tea service.
Est.£10-£20



563 A pheasant tweed fabric door stop, 28cm high, an owl form door stop.
Est.£20-£30



564 An MOD axe, MOD cans and two jerry cans.
Est.£20-£40



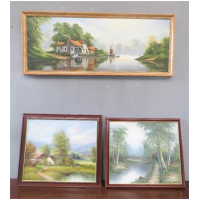
565 Royal Albert ceramics, a shaving mug, pilot wall hanging and a model boat.
Est.£10-£20



566 A brass tray, tin of pre-decimal coins and a group of ration books.
Est.£10-£20



567 Three oil on canvas.
Est.£20-£40



568 A group of miscellaneous items to include Staffordshire figure group; lady & donkey, three faux tortoiseshell combs, Capo Di Monte figures, Goebel figure no.68/2/0, and a quantity of Carnival glass.
Est.£20-£40



569 A basket containing two pairs of binoculars, trinket boxes, barometer, and other items.
Est.£20-£40



570 A quantity of blue and white china, including Victorian platters, cups, plates, etc.
Est.£10-£20



571 A group of Beswick cottage teapots, dressing table set, decorative plates, Victorian floral vases etc.
Est.£20-£30



572 A Persian carpet.
Est.£10-£20



573 A group of four painted iron garden chairs.
Est.£30-£50



574 A leatherette office chair, with swivel chrome base.
Est.£30-£50



575 A 19th century single chair, in yew wood, with pierced splats, and H form stretcher.
Est.£30-£40



576 A mahogany drop leaf table, with one single drawer and corresponding dummy drawer.
Est.£20-£40



577 A French demi-corbeille double bed, upholstered head and foot boards, including side rails.
Est.£40-£60



578 A giltwood armchair, red upholstered.
Est.£20-£30



579 Three giltwood throne chairs.
Est.£40-£50



580 A 19th century mahogany drop leaf table.
Est.£40-£60



581 A white painted pine cupboard, with single panel door.
Est.£20-£30



582 An oak sideboard with long single drawer and fluted column legs.
Est.£50-£80



583 An oak coffee table, 42 by 42 by 86cm.
Est.£10-£20



584 A pine circular top breakfast table with tripod base, 122 cm diameter.
Est.£40-£60



585 A small pine antique kitchen/side table, with single drawers, 76 by 107 by 57cm.
Est.£30-£50



586 A group of chairs and stools. A/F
Est.£10-£20



587 A mahogany gun cupboard, with single long drawer.
Est.£30-£50



588 A demi lune walnut veneered side table together with further side table.
Est.£30-£40



589 An antique white painted pine dressing chest with mirrored back.
Est.£20-£30



590 A large rush box and a similar basket.
Est.£10-£20



591 A buttoned foot stool in duck egg blue.
41cm high
Est.£20-£30



592 A mahogany wine table and cake stand.
Est.£20-£30



593 A Victorian mahogany nursing chair with
pink upholstered button back.
Est.£30-£40



594 A green metal filing cabinet.
Est.£50-£80



595 A white painted French style bedside
table.
Est.£20-£30



596 A 19th century drop leaf dining table.
Est.£50-£80



597 A set of four late 19th century dining
chairs, with splat backs and cabriole
legs.
Est.£30-£50



598 A stained pine blanket chest, with a
carved front.
Est.£20-£30



599 A four fold screen.
Est.£70-£90



600 An Edwardian oak rocking chair,
upholstered with teddy bear fabric.
Est.£60-£90



601 A Chinese low table, the long
rectangular top above shaped sides and
legs.
Est.£400-£500



602 A Victorian mahogany bow front chest
of two short over three long graduated
drawers.
Est.£60-£90



603 A mahogany coal scuttle, with brass
handle.
Est.£10-£20



604 A Victorian mahogany chest of drawers,
with two short over three long drawers,
splits in the middle, with glass handles,
bun feet.
Est.£50-£80



605 A group of seven various Victorian
chairs, some balloon back.
Est.£20-£30



606 A mahogany fire screen, with
upholstered central panel.
Est.£10-£20



607 A 19th century mahogany Pembroke table with single drawer, two drop leaves, turned legs.
Est.£30-£50



615 A Victorian pine two drawer side table.
Est.£30-£50



608 An oak and brass coat rack bearing five brass hooks, together with a coal scuttle.
Est.£20-£30



616 A small coffer/blanket chest, carved with decoration.
Est.£30-£50



609 A pair of French candlestands, hand painted, with octagonal columns.
Est.£70-£100



617 A 19th century mahogany armchair, with red velvet button back panel and seat, and fret carved decoration.
Est.£60-£90



610 An oak coal scuttle with brass handle.
Est.£10-£20



618 An Italian walnut carved corner chair, with carved cherub head to the top rail, upholstered seat.
Est.£60-£90



611 A 19th century country kitchen armchair.
Est.£30-£50



619 An Edwardian low armchair, mahogany framed, and upholstered in red.
Est.£30-£60



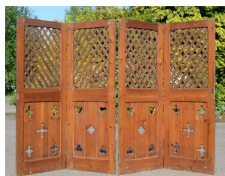
612 A pine Victorian mule chest with two drawers and iron side handles.
Est.£80-£120



620 A four fold screen, in blue ground floral pattern.
Est.£30-£50



613 A pair of pitch pine panels, with oak lattice form upper panels, and lower panels bearing pierced Gothic style motifs.
Est.£70-£100



621 An Edwardian mahogany bureau, with fall front enclosing a fitted interior, three long drawers to the front.
Est.£80-£120



614 Two vintage travelling trunks.
Est.£20-£40



622 An oak 17th century style box settle, with carved back, and triple panel front.
Est.£100-£150



623 An oak sewing table together with an occasional chair, with cane back.
Est.£20-£30



624 A small mahogany cabinet with single drawer and two cupboard doors.
Est.£30-£50



625 A mahogany pot cupboard, with white inset marble top, faceted door.
Est.£80-£120



626 A mahogany two door cabinet, two doors inlaid with ovals, bracket feet, 76 by 43 by 60cm.
Est.£20-£40



627 An 18th century oak bow front corner cupboard, with H form brackets, cast escutcheons, and with key, 102 by 66cm.
Est.£40-£50



628 A 19th century two drawer side table, with turned legs.
Est.£40-£60



629 An 18th century oak bureau, the fall front enclosing a fitted interior and one short over three long graduated drawers, 183 by 47 by 90cm.
Est.£100-£200



630 A mahogany arm chair, together with matching foot stool, with brass caps and castors, upholstered in cream cotton fabric.
Est.£60-£90



631 An 18th century oak tripod table / wine table, with dished circular top, column base, 69cm high by 51cm diameter.
Est.£50-£80



632 A Victorian armchair, upholstered in yellow velvet with green piping, with mahogany turned feet and castors.
Est.£80-£120



633 A Victorian mahogany secretaire bookcase, the glazed top enclosing three interior shelves, above the pull out secretaire front enclosing a fitted interior of compartments, above two cupboard doors.
Est.£70-£100



634 A 19th century mahogany serpentine fronted writing table, with three drawers to the front, and stamped Gillows.
Est.£400-£600



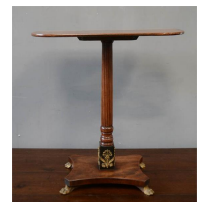
635 An 18th century walnut lowboy, with three drawers, shaped apron and cabriole legs.
Est.£300-£500



636 A 19th century French marquetry rosewood Bonheur de Jour, with raised back composed of cupboards and drawers.
Est.£200-£400



637 A fine walnut occasional table circa 1800, manner of George Smith, with single fluted central column
Est.£500-£800



638 A walnut shepherds crook armchair, upholstered seat.
Est.£700-£1,000



639 A Victorian mahogany dining table, with wind out mechanism bearing Patents label, with original winder, and two extra leaves.
Est.£80-£120



640 A Victorian coffin carrier.
Est.£60-£90

